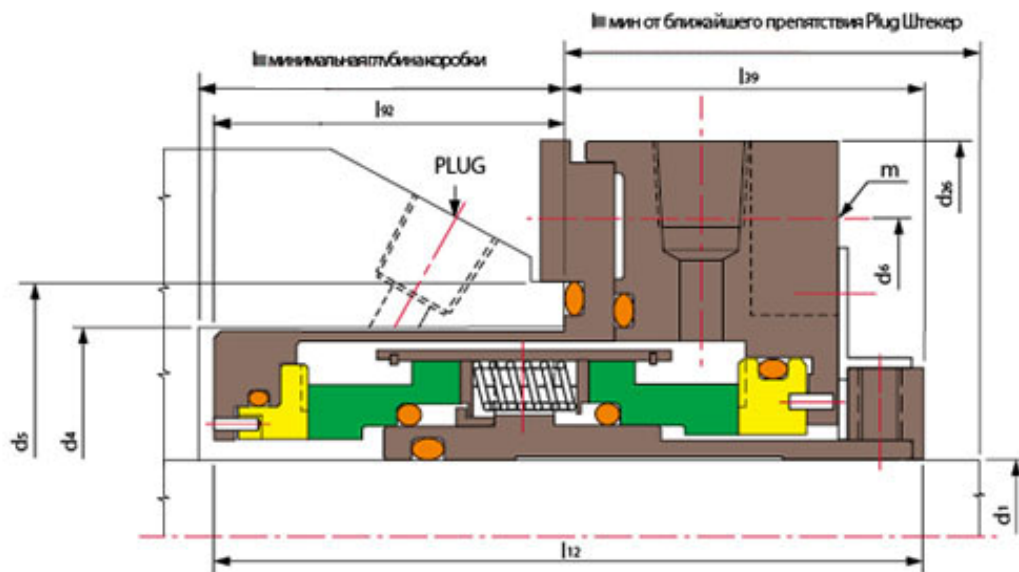
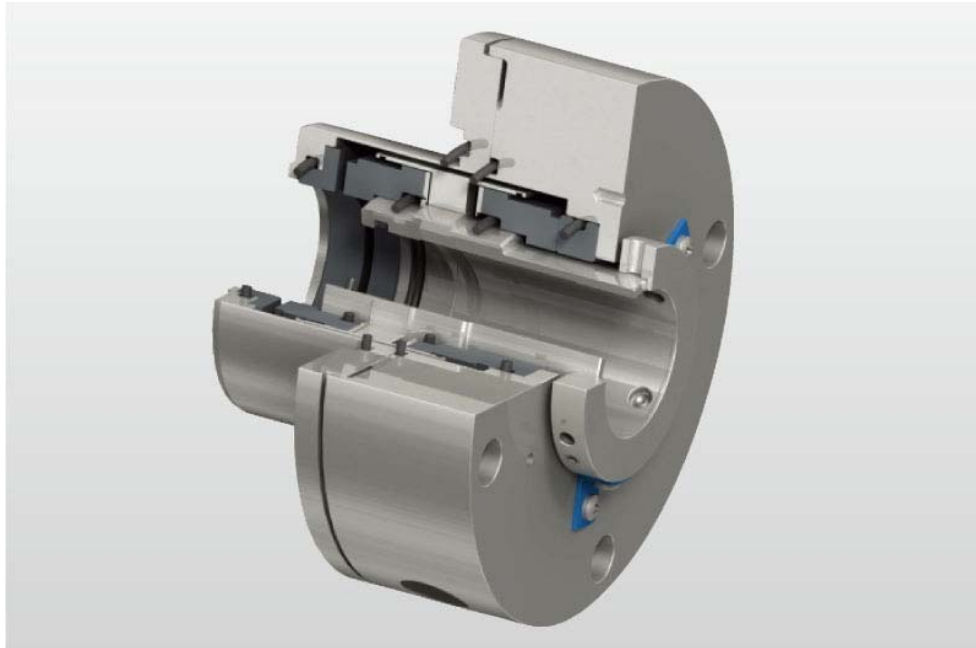


## TSDGS-J03 1.125-4.000(inches) Dry Gas Seal



- Rotary Ring (Carbon)
- Stationary Ring (SIC / TC)
- Secondary Seal (VITON/Encapsulated Ring/PTFE/EPDM/Kalrez)
- Other Parts (SUS304/SUS316)

### Operating Limits

Shanghai Trisun Parts Manufacture Co.,Ltd.

Head office in Shanghai:

Room 05-06, 16th Floor, Hongjia Building, No.388 Fushan Rd. (Near Xiangcheng Rd.), Pudong, Shanghai, China.

Post Code: 200122

Tel: +86-21-58355541,+86-21-58353145,+86-21-58353343

Fax: +86-21-58353141

E-mail: [trisunseal@yahoo.com.cn](mailto:trisunseal@yahoo.com.cn)



Pressure: ≤2.1MPa

Speed: ≤1450rpm

Temperature: -20℃~+260℃

Seal Size (mm)	d <sub>1</sub>	d <sub>4</sub>	d <sub>26</sub>	l <sub>12</sub>	l <sub>39</sub>	l <sub>90</sub>	l <sub>91</sub>	l <sub>92</sub>	d <sub>5</sub>	m	d <sub>6</sub>
1.125	28.5 8	66.6 8	114. 30	109. 52	57.1 5	58.7 2	56.3 7	52.3 7	79.3 8	M1 0	95.2 5
1.375	34.9 3	73.0 3	127. 00	103. 20	52.4 0	60.3 3	54.8 0	50.0 8	85.7 3	M1 1	101. 60
1.500	38.1 0	76.2 0	139. 70	103. 20	50.8 0	60.3 3	56.4 0	52.4 0	95.2 0	M1 2	114. 30
1.625	41.2 8	85.7 3	136. 53	119. 67	53.6 7	69.0 0	70.0 0	66.0 0	98.4 3	M1 0	112. 70
1.750	44.4 5	88.9 0	165. 10	119. 93	65.9 6	71.4 2	57.9 7	53.9 7	110. 24	M1 2	139. 70
1.875	47.6 3	92.0 8	149. 23	132. 94	78.5 4	92.0 8	58.4 1	54.4 1	104. 78	M1 2	127. 00
2.000	50.8 0	95.2 5	146. 05	116. 65	64.2 8	65.0 7	56.3 7	52.3 7	111. 13	M1 0	127. 00
2.125	53.9 8	98.4 2	180. 98	118. 30	65.1 7	72.2 1	57.1 3	53.1 3	119. 66	M1 6	152. 40
2.375	60.0 3	107. 95	180. 98	117. 04	55.5 0	64.2 9	65.4 9	61.4 9	133. 35	M1 6	152. 40
2.500	63.5 0	114. 30	200. 03	117. 09	52.3 9	73.0 3	68.7 0	64.7 0	138. 56	M1 6	171. 45
2.625	66.6 8	117. 48	177. 80	117. 05	52.3 5	103. 17	68.7 0	64.7 0	130. 18	M1 2	152. 40
2.750	69.8 5	120. 65	200. 03	124. 82	62.9 2	72.3 9	68.9 0	61.9 0	138. 56	M1 6	171. 45
3.000	76.2 0	127. 00	203. 20	124. 99	67.8 4	121. 44	61.1 5	57.1 5	146. 05	M1 6	171. 45
3.250	82.5 5	133. 35	195. 25	131. 30	71.0 0	119. 99	64.3 3	60.3 3	146. 05	M1 6	165. 00
3.500	88.9 0	142. 88	210. 34	142. 44	82.1 1	133. 35	64.3 3	60.3 3	158. 75	M1 6	177. 80
3.750	95.2 5	152. 40	239. 70	147. 65	65.1 5	82.5 5	86.5 0	82.5 0	171. 40	M1 6	209. 55
4.000	101. 0	158. 0	248. 0	157. 0	113. 0	127. 0	48.3 0	44.3 0	185. 0	M2 0	215. 0

**Shanghai Trisun Parts Manufacture Co.,Ltd.**

**Head office in Shanghai:**

Room 05-06, 16th Floor, Hongjia Building, No.388 Fushan Rd. (Near Xiangcheng Rd.), Pudong, Shanghai, China.

**Post Code:** 200122

**Tel:** +86-21-58355541,+86-21-58353145,+86-21-58353343

**Fax:** +86-21-58353141

**E-mail:** [trisunseal@yahoo.com.cn](mailto:trisunseal@yahoo.com.cn)



	60	75	00	47	17	00	0	0	00	0	00
--	----	----	----	----	----	----	---	---	----	---	----

---

**Shanghai Trisun Parts Manufacture Co.,Ltd.**

**Head office in Shanghai:**

Room 05-06, 16th Floor, Hongjia Building, No.388 Fushan Rd. (Near Xiangcheng Rd.), Pudong, Shanghai, China.

**Post Code:** 200122

**Tel:** +86-21-58355541,+86-21-58353145,+86-21-58353343

**Fax:** +86-21-58353141

**E-mail:** [trisunseal@yahoo.com.cn](mailto:trisunseal@yahoo.com.cn)