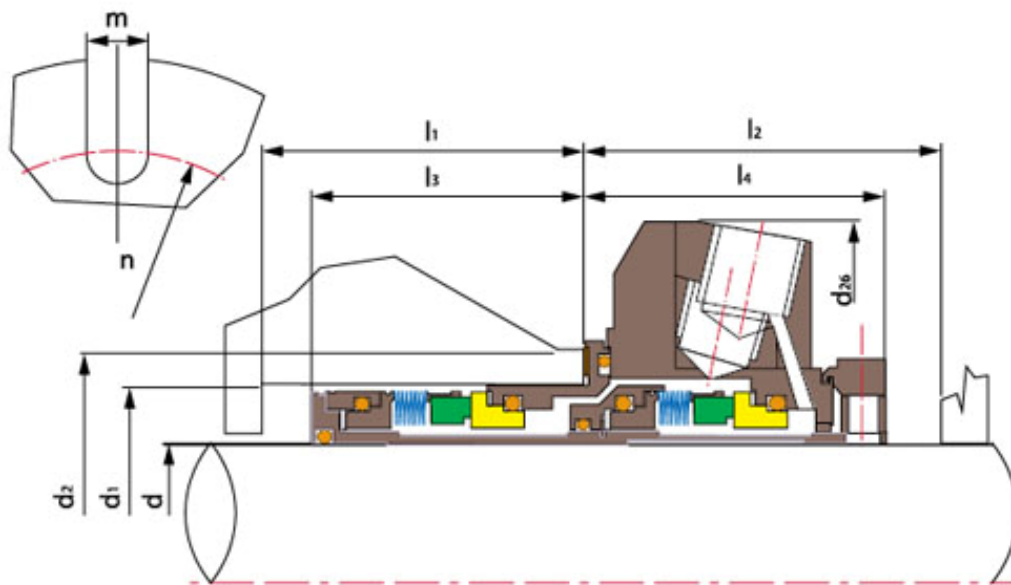
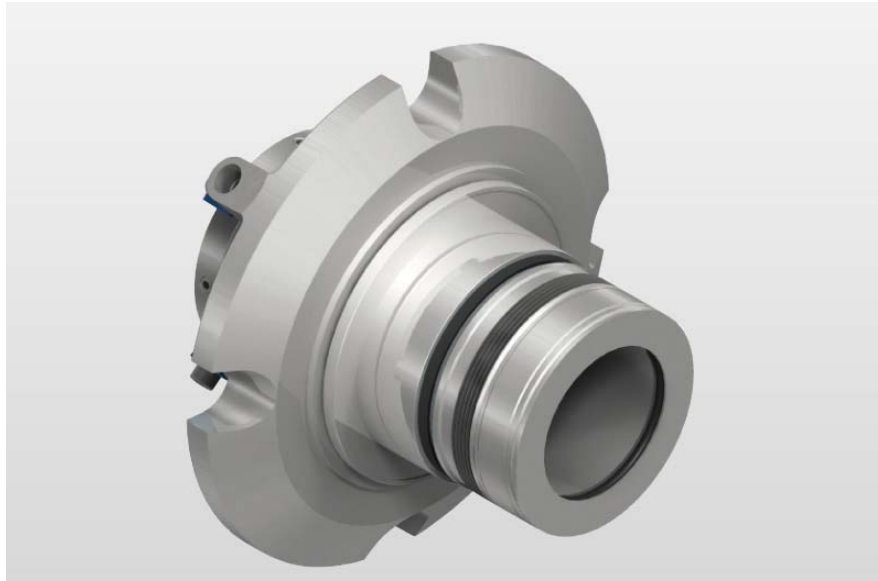


## TSMB-FS09 1.000-2.750(inches) Metal Bellows Seal



### Operating Limits

Pressure: <math><21\text{MPa}</math>(shaft diameter  $\leq 75\text{mm}</math>)$

Speed:  $\leq 25\text{m/s}</math>$

Temperature:  $-30^{\circ}\text{C} \sim +205^{\circ}\text{C}</math>$

Rotary Ring (SiC/Carbon/TC)

---

**Shanghai Trisun Parts Manufacture Co.,Ltd.**

**Head office in Shanghai:**

Room 05-06, 16th Floor, Hongjia Building, No.388 Fushan Rd. (Near Xiangcheng Rd.), Pudong, Shanghai, China.

**Post Code:** 200122

**Tel:** +86-21-58355541,+86-21-58353145,+86-21-58353343

**Fax:** +86-21-58353141

**E-mail:** [trisunseal@yahoo.com.cn](mailto:trisunseal@yahoo.com.cn)



Stationary Ring (SiC/TC)

Secondary Seal (VITON/Encapsulated Ring/PTFE)

Metal Bellows (SUS316L/AM350/Incone1718/Titanium/Hastelloy-C/Alloy-20)

Other Parts (SUS304/SUS316/Titanium/Hastelloy-C)

d (inches )	d <sub>1</sub>		d <sub>2</sub>	d <sub>26</sub>	l <sub>3</sub>	l <sub>1</sub>	l <sub>4</sub>	l <sub>2</sub>	n	m
	min	max								
1.000	1.62 5	1.87 5	2.11 5	3.69~ 3.75	1.83 8	1.90 0	2.06 2	2.12 4	2.75 0	0.44 0
1.125	1.75 0	2.00 0	2.24 0	3.69~ 3.75	1.83 8	1.90 0	2.06 2	2.12 4	2.87 5	0.44 0
1.250	1.89 0	2.24 5	2.49 5	4.19~ 4.25	1.83 8	1.90 0	2.06 2	2.12 4	3.12 5	0.56 2
1.375	2.00 0	2.37 5	2.61 5	3.94~ 4.00	1.83 8	1.90 0	2.06 2	2.12 4	3.25 0	0.44 0
1.437	2.25 0	2.68 8	2.77 5	4.72~ 4.78	1.90 3	1.96 5	2.12 2	2.12 4	3.75 0	0.56 0
1.500	2.25 0	2.52 5	2.77 5	4.69~ 4.75	1.90 3	1.96 5	2.12 2	2.18 4	3.75 0	0.56 0
1.625	2.37 5	2.78 0	3.03 0	4.69~ 4.75	1.90 3	1.96 5	2.12 2	2.18 4	3.75 0	0.56 0
1.750	2.50 0	2.87 5	3.15 0	4.94~ 5.00	1.90 3	1.96 5	2.12 2	2.18 4	3.87 5	0.56 0
1.875	2.62 5	2.87 5	3.15 0	4.94~ 5.00	1.90 3	1.96 5	2.12 2	2.18 4	3.87 5	0.56 0
1.937	2.69 0	2.92 0	\	\	1.90 3	1.96 5	2.12 2	2.18 4	\	\
2.000	2.75 0	3.03 0	3.28 0	5.00~ 5.12	1.90 3	1.96 5	2.12 2	2.18 4	4.12 0	0.68 8
2.125	2.87 5	3.12 5	3.43 0	5.94~ 6.00	1.90 3	1.96 5	2.12 2	2.18 4	4.25 0	0.75 0
2.250	3.00 0	3.28 0	\	\	1.90 3	1.96 5	2.12 2	2.18 4	\	\
2.375	3.12 5	3.68 7	3.97 5	6.32~ 6.38	1.90 3	1.96 5	2.12 2	2.18 4	4.87 5	0.75 0
2.437	3.37 5	3.45 0	\	6.32~ 6.38	1.93 4	1.99 6	2.09 1	2.15 3	4.87 5	0.75 0
2.500	3.37 5	3.68 7	3.97 5	6.32~ 6.38	1.90 3	1.96 5	2.12 2	2.18 4	4.87 5	0.75 0

**Shanghai Trisun Parts Manufacture Co.,Ltd.**

**Head office in Shanghai:**

Room 05-06, 16th Floor, Hongjia Building, No.388 Fushan Rd. (Near Xiangcheng Rd.), Pudong, Shanghai, China.

**Post Code:** 200122

**Tel:** +86-21-58355541,+86-21-58353145,+86-21-58353343

**Fax:** +86-21-58353141

**E-mail:** [trisunseal@yahoo.com.cn](mailto:trisunseal@yahoo.com.cn)

2.625	3.62 5	4.31 2	4.61 5	7.19~ 7.25	2.42 9	2.49 1	2.90 6	2.96 8	5.62 5	0.88 0
2.750	3.75 0	4.31 2	4.61 5	7.19~ 7.25	2.42 9	2.49 1	2.90 6	2.96 8	5.62 5	0.88 0

---

**Shanghai Trisun Parts Manufacture Co.,Ltd.**

**Head office in Shanghai:**

Room 05-06, 16th Floor, Hongjia Building, No.388 Fushan Rd. (Near Xiangcheng Rd.), Pudong, Shanghai, China.

**Post Code:** 200122

**Tel:** +86-21-58355541,+86-21-58353145,+86-21-58353343

**Fax:** +86-21-58353141

**E-mail:** [trisunseal@yahoo.com.cn](mailto:trisunseal@yahoo.com.cn)