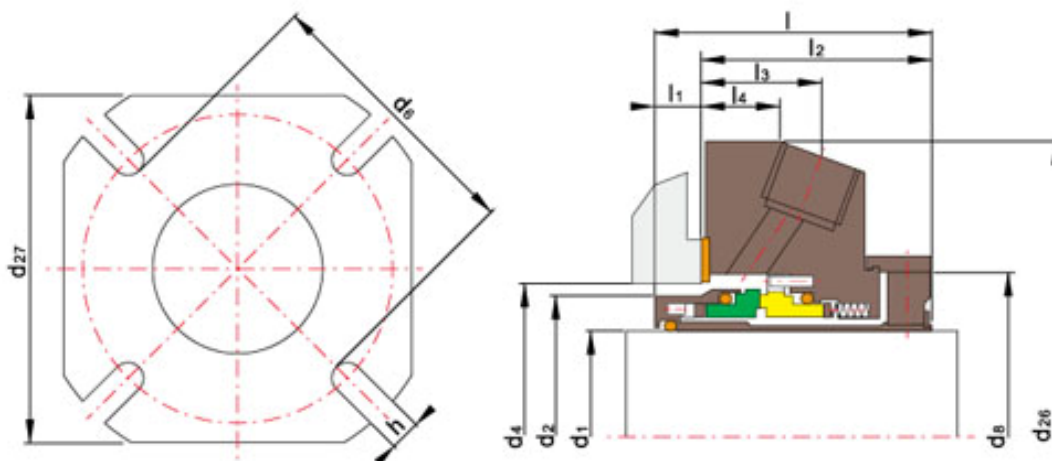
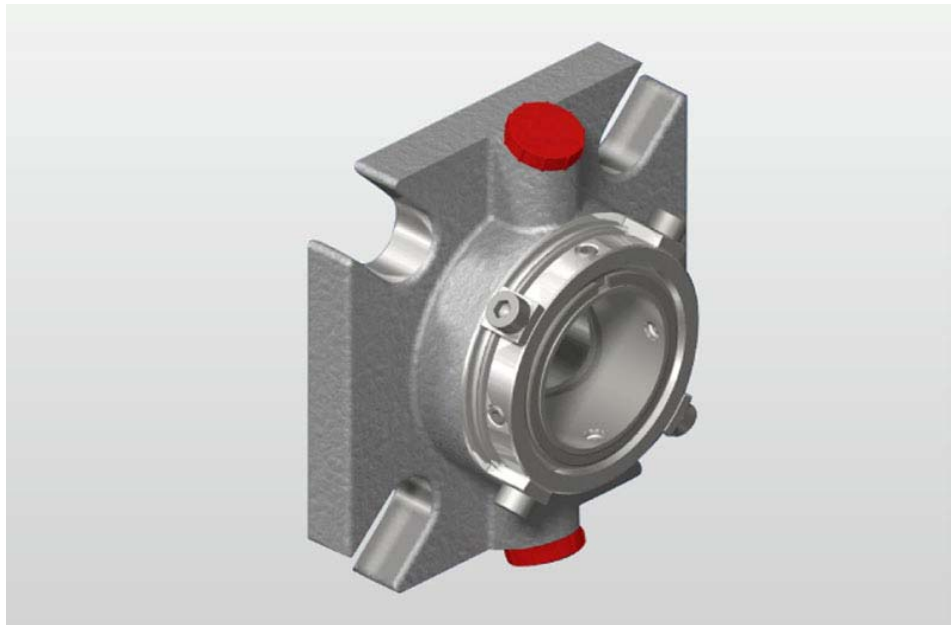


## TSSC-A05 24mm-70mm



### Features:

#### Operating Limits:

Pressure:  $\leq 2.3\text{MPa}$

Speed:  $\leq 23\text{m/s}$

Temperature:  $-30^{\circ}\text{C} \sim 200^{\circ}\text{C}$

1. Rotary Ring (Carbon/SiC/TC)
2. Stationary Ring (SiC/TC)
3. Secondary Seal (VITON/EPDM/Kalrez)

---

**Shanghai Trisun Parts Manufacture Co.,Ltd.**

#### Head office in Shanghai:

Room 05-06, 16th Floor, Hongjia Building, No.388 Fushan Rd. (Near Xiangcheng Rd.), Pudong, Shanghai, China.

**Post Code:** 200122

**Tel:** +86-21-58355541,+86-21-58353145,+86-21-58353343

**Fax:** +86-21-58353141

**E-mail:** [trisunseal@yahoo.com.cn](mailto:trisunseal@yahoo.com.cn)



4.Other Parts (C-276/Duplex/316)

Seal size (inches)	d <sub>1</sub>	d <sub>2</sub>	d <sub>4</sub>		d <sub>6</sub>	d <sub>8</sub>	d <sub>26</sub>	d <sub>27</sub>	l	l <sub>1</sub>	l <sub>2</sub>	l <sub>3</sub>	l <sub>4</sub>	h
			min	max										
24	24	38.0	40.0	48.0	61.0	51.0	105.0	99.0	55.7	10	45.7	20.5	11.9	14.0
25	25	39.0	41.0	51.0	61.0	51.0	105.0	101.6	55.7	10	45.7	20.5	11.9	14.0
28	28	42.6	44.0	54.0	65.0	55.5	111.0	99.0	55.7	10	45.7	20.3	11.9	14.0
30	30	44.1	46.0	54.0	64.6	56.4	105.0	97.8	55.7	10	45.7	20.3	11.9	14.0
32	32	47.1	49.0	57.0	66.5	59.5	105.0	99.0	55.7	10	45.7	21.2	14.0	14.0
33	33	47.1	49.0	57.0	66.5	59.5	105.0	99.0	55.7	10	45.7	21.2	14.0	14.0
35	35	49.0	51.0	59.0	68.5	61.5	111.0	104.1	55.7	10	45.7	21.5	13.2	14.0
38	38	52.9	57.0	70.0	80.7	70.7	135.0	114.3	57.6	10	47.6	24.6	16.0	14.0
40	40	54.8	59.0	70.5	80.7	70.7	135.0	114.3	57.6	10	47.6	24.6	16.0	14.0
43	43	56.1	61.0	70.5	80.7	70.7	135.0	114.3	7.0	10	47.6	20.5	15.5	14.0
45	45	59.3	64.0	75.0	83.7	75.7	139.0	117.5	57.6	10	47.6	24.3	16.0	14.0
48	48	62.4	66.6	75.0	83.7	75.7	139.0	117.5	57.6	10	47.6	24.3	16.0	14.0
50	50	65.3	70.0	78.0	87.6	79.0	150.0	124.5	57.6	10	47.6	24.3	16.0	17.5
53	53	68.8	73.0	87.0	97.0	85.0	150.0	136.5	57.6	10	47.6	22.5	15.5	17.5
55	58	68.8	73.0	87.0	97.0	85.0	150.0	136.5	57.6	10	47.6	22.5	15.5	17.5
58	60	72.0	76.2	92.0	102.4	88.7	164.5	139.7	57.6	10	47.6	24.6	16.0	17.5
60	63	75.2	80.0	92.0	102.4	88.7	164.5	139.7	57.6	10	47.6	24.6	16.0	17.5
63	65	78.3	83.0	98.5	108.7	96.1	171.0	147.4	57.6	10	47.6	23.7	16.0	17.5
65	70	81.5	86.0	98.5	108.7	96.1	171.0	147.4	57.6	10	47.6	23.7	16.0	17.5
70	70	84.7	89.0	100.0	111.9	98.3	180.5	152.4	57.6	10	47.6	24.3	16.0	17.5

**Shanghai Trisun Parts Manufacture Co.,Ltd.**

**Head office in Shanghai:**

Room 05-06, 16th Floor, Hongjia Building, No.388 Fushan Rd. (Near Xiangcheng Rd.), Pudong, Shanghai, China.

**Post Code:** 200122

**Tel:** +86-21-58355541,+86-21-58353145,+86-21-58353343

**Fax:** +86-21-58353141

**E-mail:** [trisunseal@yahoo.com.cn](mailto:trisunseal@yahoo.com.cn)