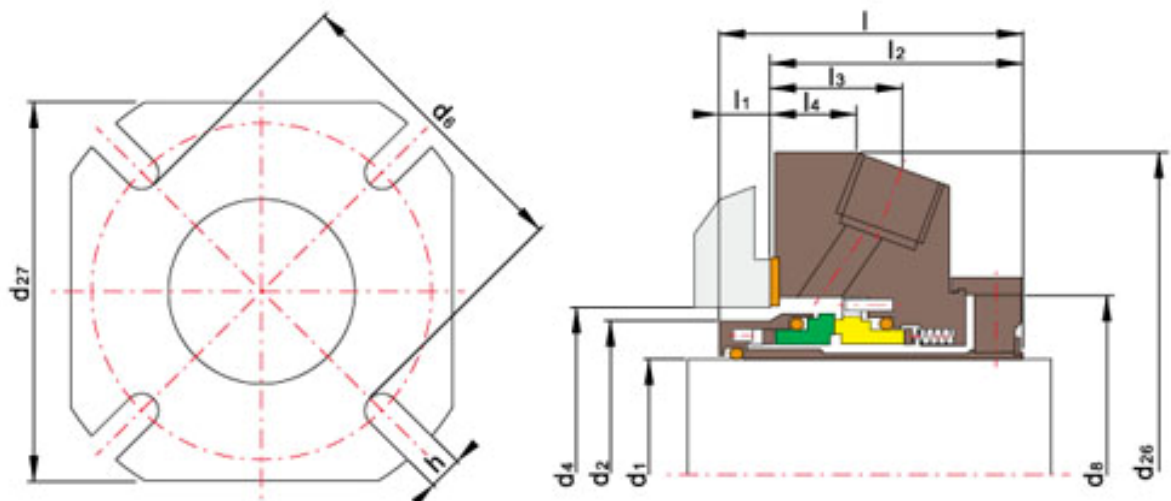
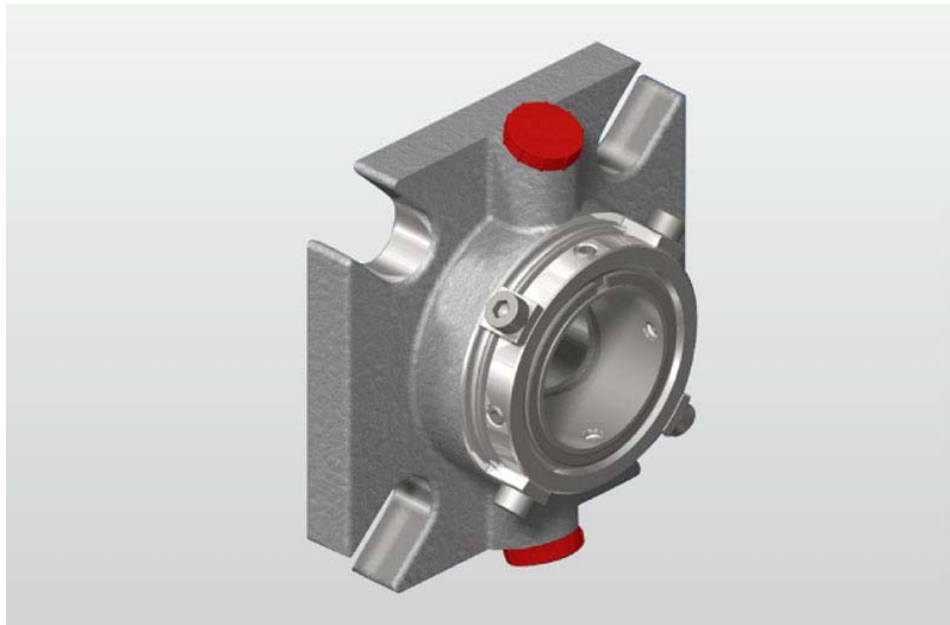


TSSC-A05 1.000mm-2.750mm



**Features:**

**Operating Limits:**

Pressure:  $\leq 2.3\text{MPa}$

Speed:  $\leq 23\text{m/s}$

Temperature:  $-30^{\circ}\text{C} \sim 200^{\circ}\text{C}$

1. Rotary Ring (Carbon/SiC/TC)
2. Stationary Ring (SiC/TC)

---

**Shanghai Trisun Parts Manufacture Co.,Ltd.**

**Head office in Shanghai:**

Room 05-06, 16th Floor, Hongjia Building, No.388 Fushan Rd. (Near Xiangcheng Rd.), Pudong, Shanghai, China.

**Post Code:** 200122

**Tel:** +86-21-58355541,+86-21-58353145,+86-21-58353343

**Fax:** +86-21-58353141

**E-mail:** [trisunseal@yahoo.com.cn](mailto:trisunseal@yahoo.com.cn)



3.Secondary Seal (VITON/EPDM/Kalrez)

4. Other Parts (C-276/Duplex/316)

Seal size (inches)	d <sub>1</sub>	d <sub>2</sub>	d <sub>4</sub>		d <sub>6</sub>	d <sub>8</sub>	d <sub>26</sub>	d <sub>27</sub>	l	l <sub>1</sub>	l <sub>2</sub>	l <sub>3</sub>	l <sub>4</sub>	h
			min	max										
1.000	1.000	1.538	1.625	2.000	2.401	2.008	4.134	3.900	2.194	0.394	1.800	0.807	0.469	0.551
1.125	1.125	1.678	1.750	2.125	2.559	2.183	4.375	4.000	2.194	0.394	1.800	0.800	0.469	0.551
1.250	1.250	1.853	1.875	2.250	2.618	2.34	4.134	3.900	2.194	0.394	1.800	0.835	0.551	0.551
1.375	1.375	1.932	2.000	2.312	2.697	2.418	4.375	4.100	2.194	0.394	1.800	0.846	0.520	0.551
1.500	1.500	2.084	2.250	2.750	3.177	2.783	5.315	4.500	2.269	0.394	1.875	0.970	0.630	0.551
1.625	1.625	2.209	2.375	2.750	3.177	2.783	5.315	4.500	2.269	0.394	1.875	0.807	0.610	0.551
1.750	1.750	2.334	2.500	2.937	3.297	2.982	5.475	4.625	2.269	0.394	1.875	0.957	0.630	0.551
1.875	1.875	2.459	2.625	2.937	3.297	2.982	5.475	4.625	2.269	0.394	1.875	0.957	0.630	0.551
2.000	2.000	2.569	2.750	3.062	3.450	3.108	5.906	4.900	2.269	0.394	1.875	0.970	0.630	0.689
2.125	2.125	2.709	2.875	3.437	3.821	3.346	5.906	5.375	2.269	0.394	1.875	0.970	0.610	0.689
2.250	2.250	2.834	3.000	3.625	4.030	3.493	6.475	5.500	2.269	0.394	1.875	0.970	0.630	0.689
2.375	2.375	2.959	3.125	3.625	4.030	3.493	6.475	5.500	2.269	0.394	1.875	0.970	0.630	0.689
2.500	2.500	3.084	3.250	3.875	4.280	3.785	6.725	5.800	2.269	0.394	1.875	0.933	0.630	0.689
2.625	2.625	3.209	3.375	3.875	4.280	3.785	6.725	5.800	2.269	0.394	1.875	0.933	0.630	0.689
2.750	2.750	3.334	3.500	3.937	4.405	3.871	7.100	6.000	2.269	0.394	1.875	0.957	0.630	0.689

**Shanghai Trisun Parts Manufacture Co.,Ltd.**

**Head office in Shanghai:**

Room 05-06, 16th Floor, Hongjia Building, No.388 Fushan Rd. (Near Xiangcheng Rd.), Pudong, Shanghai, China.

**Post Code:** 200122

**Tel:** +86-21-58355541,+86-21-58353145,+86-21-58353343

**Fax:** +86-21-58353141

**E-mail:** [trisunseal@yahoo.com.cn](mailto:trisunseal@yahoo.com.cn)