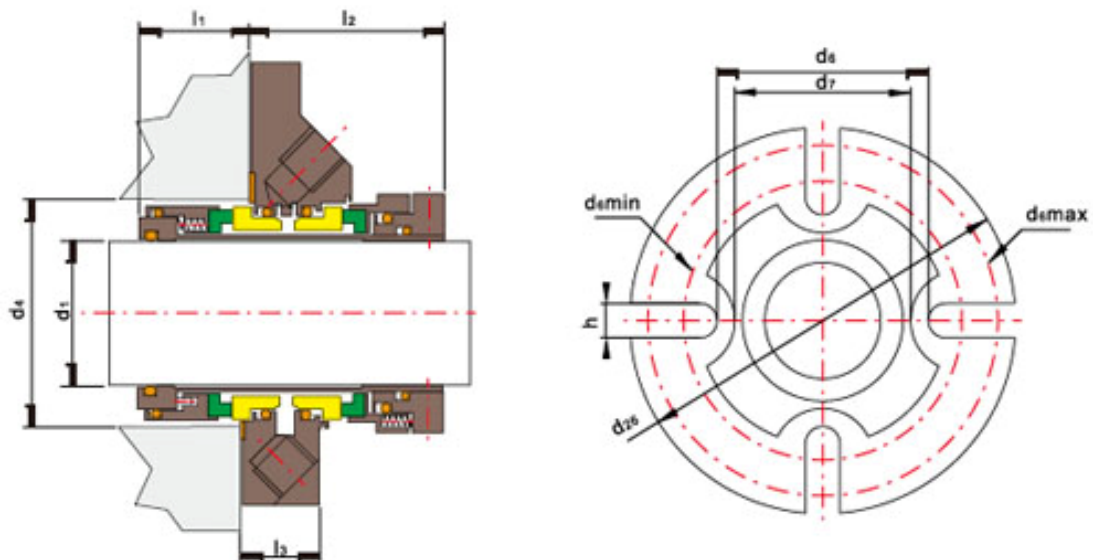
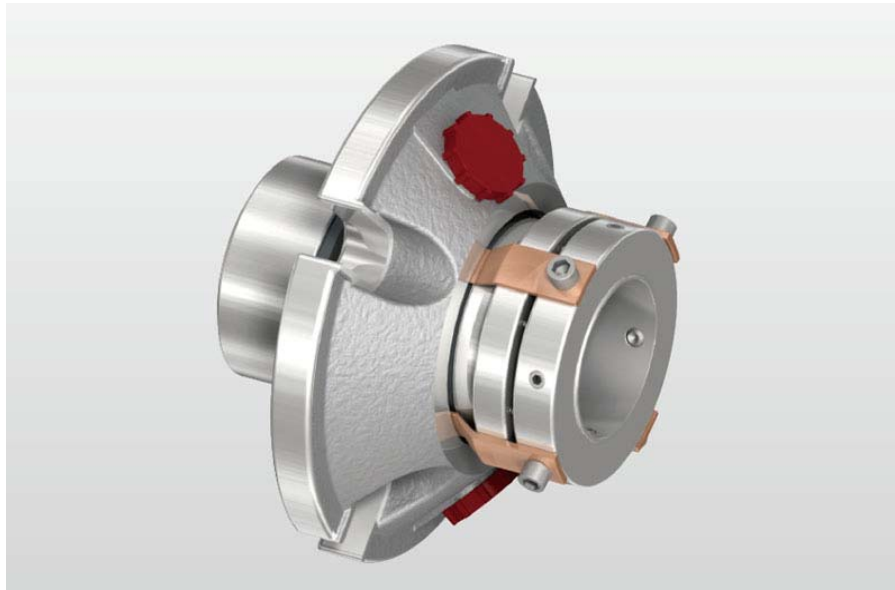


TSDC-A04 24mm-120mm



Features:

Operating Limits:

Pressure: $\leq 2.1\text{MPa}$

Speed: $\leq 25\text{m/s}$

Temperature: $-40^\circ\text{C} \sim 204^\circ\text{C}$

1. Rotary Ring (SiC/Carbon/TC)
2. Stationary Ring (SiC/TC)

Shanghai Trisun Parts Manufacture Co.,Ltd.

Head office in Shanghai:

Room 05-06, 16th Floor, Hongjia Building, No.388 Fushan Rd. (Near Xiangcheng Rd.), Pudong, Shanghai, China.

Post Code: 200122

Tel: +86-21-58355541, +86-21-58353145, +86-21-58353343

Fax: +86-21-58353141

E-mail: trisunseal@yahoo.com.cn

3. Secondary Seal (VITON/EPDM/Kalrez)

4. Other Parts (C-276/Duplex/316)

d ₁ (mm)	d ₄	d ₆	d ₇	d ₈	d ₂₆	l ₁	l ₂	l ₃	h
24	40.0	74.6	60.3	-	104.8	30.7	51.3	23.5	12
25	41.0	74.6	60.3	-	104.8	30.7	51.3	23.5	12
28	44.0	74.6	60.3	-	108.0	30.7	51.3	23.5	12
30	46.0	77.8	63.5	-	111.0	30.7	51.3	23.5	12
32	48.0	77.8	63.5	-	111.0	30.7	51.3	23.5	12
33	49.0	77.8	63.5	-	111.0	30.7	51.3	23.5	12
35	50.8	80.9	66.7	-	111.0	30.7	51.3	23.5	12
38	57.2	85.7	71.9	-	127.0	27.7	56.5	21.6	12
40	57.2	85.7	71.9	-	127.0	27.7	56.5	21.6	12
43	60.3	85.7	71.9	-	127.0	27.7	56.5	21.6	12
45	63.5	90.5	76.7	-	133.4	27.7	56.5	21.6	12
48	66.7	90.5	76.7	-	133.4	27.7	56.5	21.6	12
50	68.0	90.5	76.7	-	133.4	27.7	56.5	21.6	12
53	71.0	100.0	86	-	139.7	29.2	57.2	21.6	12
55	73.0	111.1	93.7	-	146.0	29.2	57.2	21.6	16
58	76.2	111.1	93.7	-	146.0	29.2	57.2	21.6	16
60	79.4	117.5	100	-	152.4	29.2	57.2	21.6	16
63	85.7	127.0	109.5	-	177.8	31.8	63.8	23.5	16
65	88.9	127.0	109.5	-	177.8	31.8	63.8	23.5	16
70	92.1	127.0	109.5	-	177.8	31.8	63.8	23.5	16
75	98.5	142.9	125.4	-	190.5	31.8	63.8	23.5	16

Shanghai Trisun Parts Manufacture Co.,Ltd.

Head office in Shanghai:

Room 05-06, 16th Floor, Hongjia Building, No.388 Fushan Rd. (Near Xiangcheng Rd.), Pudong, Shanghai, China.

Post Code: 200122

Tel: +86-21-58355541,+86-21-58353145,+86-21-58353343

Fax: +86-21-58353141

E-mail: trisunseal@yahoo.com.cn

80	101.6	142.9	125.4	-	190.5	31.8	63.8	23.5	16
85	108.0	152.4	135	-	203.2	31.8	63.8	23.5	16
90	114.3	171.5	150.8	127.0	215.9	31.8	47.7	19.6	20
95	117.5	171.5	150.8	127.0	215.9	31.8	47.7	19.6	20
100	123.9	188.9	168.3	136.5	228.6	31.8	47.7	19.6	20
115	142.9	211.1	186.6	155.6	254.0	31.8	47.7	19.6	22
120	142.9	211.1	186.6	155.6	254.0	31.8	47.7	19.6	22

Shanghai Trisun Parts Manufacture Co.,Ltd.

Head office in Shanghai:

Room 05-06, 16th Floor, Hongjia Building, No.388 Fushan Rd. (Near Xiangcheng Rd.), Pudong, Shanghai, China.

Post Code: 200122

Tel: +86-21-58355541,+86-21-58353145,+86-21-58353343

Fax: +86-21-58353141

E-mail: trisunseal@yahoo.com.cn