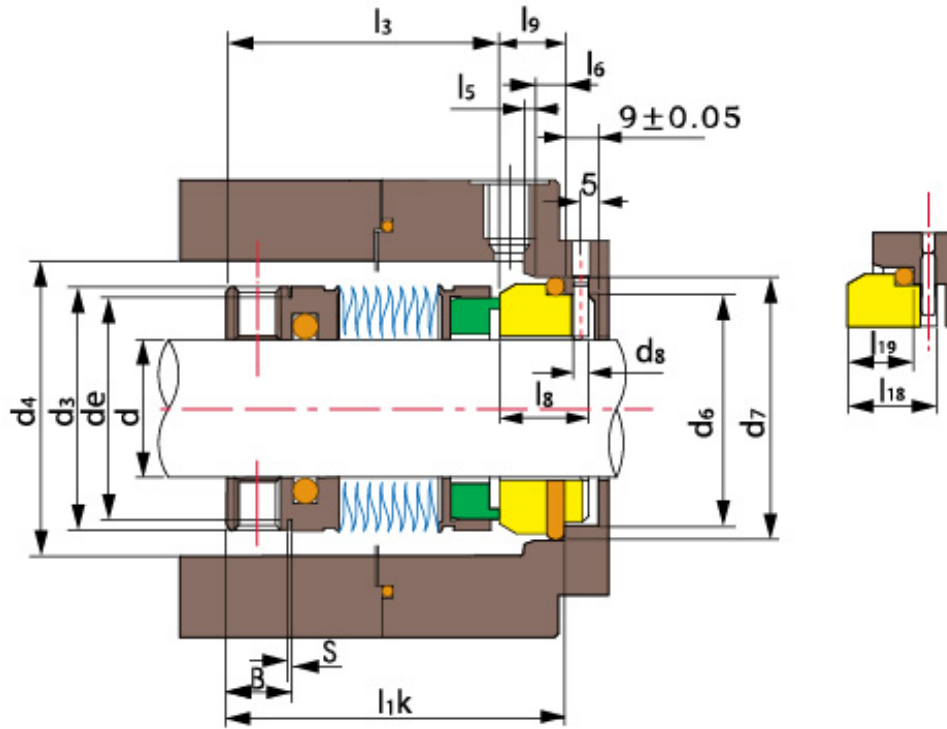
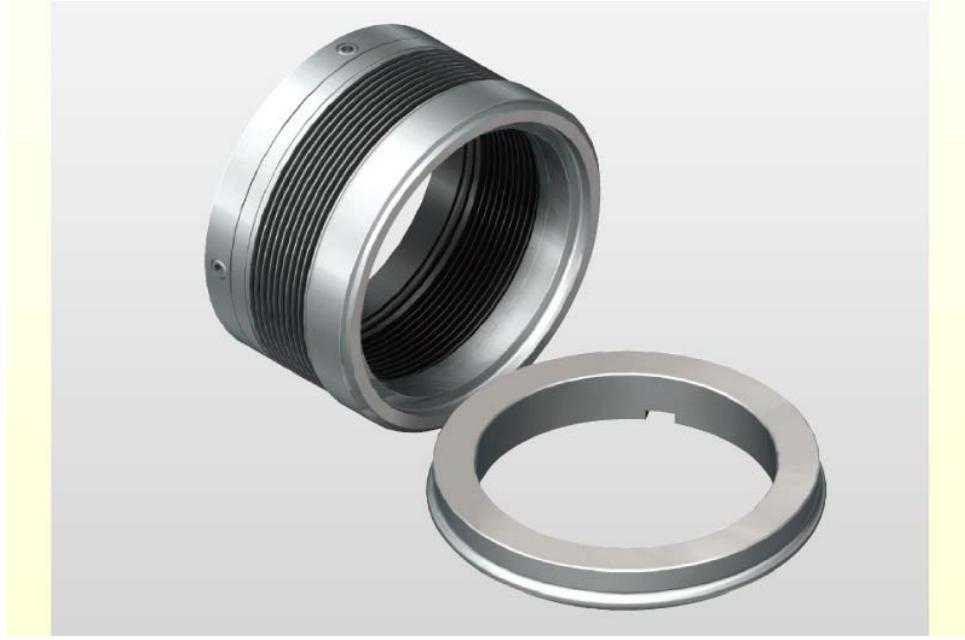


## TSMB-B01 16mm-100mm Metal K r kl  Salmastra



### alıřma Sınırları

Basın: <2.5MPa

Hız:  $\leq 20$ m/s

Isı:  $-40^\circ\text{C} \sim +220^\circ\text{C}$

**Shanghai Trisun Parts Manufacture Co.,Ltd.**

**řangay Merkez Ofis:**

Room 05-06, 16th Floor, Hongjia Building, No.388 Fushan Rd. (Near Xiangcheng Rd.), Pudong, Shanghai, China.

**Posta Kodu:** 200122

**Tel:** +86-21-58355541,+86-21-58353145,+86-21-58353343

**Fax:** +86-21-58353141

**E-mail:** [trisun24@trisunltd.com](mailto:trisun24@trisunltd.com)

Devir Halkası (SiC/Karbon/TC)

Sabit Halka (SiC/TC)

İkincil Salmastra (VITON/Kapsüllü Halka/PTFE)

Metal Körük (SUS316L/AM350/Inconel718/Titanyum/Hastelloy-C/Alaşım-20)

Diğer Parçalar (SUS304/SUS316/Titanyum/Hastelloy-C)

d (mm)	d <sub>3</sub>	d <sub>6</sub>	d <sub>7</sub>	d <sub>8</sub>	d <sub>e</sub>	d <sub>4</sub>	l <sub>1k</sub>	l <sub>3</sub>	l <sub>5</sub>	l <sub>6</sub>	l <sub>8</sub>	l <sub>9</sub>	l <sub>18</sub>	l <sub>19</sub>	S	B
16	30.0	23	27	3	25.0	38	42.5	32.5	1.5	4	17.5	10.0	\	\	1.6	9.0
18	32.0	27	33	3	28.0	39	37.5	30.5	2.0	5	14.0	11.5	15.0	7.0	1.6	10.0
20	33.5	29	35	3	29.5	41	37.5	30.5	2.0	5	14.0	11.5	15.0	7.0	1.6	10.0
22	36.5	31	37	3	32.0	44	37.5	30.5	2.0	5	14.0	11.5	15.0	7.0	1.6	10.0
24	39.0	33	39	3	34.5	47	40.0	28.5	2.0	5	19.5	11.5	15.0	7.0	1.6	8.2
25	39.6	34	40	3	35.5	48	40.0	28.5	2.0	5	19.5	11.5	15.0	7.0	1.6	8.5
28	42.8	37	43	3	38.5	51	42.5	31.0	2.0	5	19.5	11.5	15.0	7.0	1.6	9.0
30	45.0	39	45	3	40.5	53	42.5	31.0	2.0	5	19.5	11.5	15.0	7.0	1.6	8.5
32	46.0	42	48	3	42.0	55	42.5	31.0	2.0	5	19.5	11.5	15.0	7.0	1.6	9.2
33	48.0	42	48	3	43.0	56	42.5	31.0	2.0	5	19.5	11.5	15.0	7.0	1.6	9.2
35	49.2	44	50	3	45.5	58	42.5	31.0	2.0	5	19.5	11.5	15.0	7.0	1.6	9.5
38	52.3	49	56	4	48.0	61	45.0	31.0	2.0	6	22.0	14.0	16.0	8.0	1.6	9.2
40	55.5	51	58	4	50.0	64	45.0	31.0	2.0	6	22.0	14.0	16.0	8.0	1.6	9.2
43	57.5	54	61	4	53.0	67	45.0	31.0	2.0	6	22.0	14.0	16.0	8.0	1.6	9.2
45	58.7	56	63	4	55.0	69	45.0	31.0	2.0	6	22.0	14.0	16.0	8.0	1.6	9.5
48	61.9	59	66	4	58.0	72	45.0	31.0	2.0	6	22.0	14.0	16.0	8.0	1.6	9.2
50	65.0	62	70	4	60.5	74	47.5	32.5	2.5	6	23.0	15.0	17.0	9.5	1.6	10.5
53	68.2	65	73	4	64.0	77	47.5	32.5	2.5	6	23.0	15.0	17.0	9.5	1.6	10.5
55	70.0	67	75	4	65.5	80	47.5	32.5	2.5	6	23.0	15.0	17.0	9.5	1.6	10.0
58	71.7	70	78	4	67.0	83	52.5	37.5	2.5	6	23.0	15.0	18.0	10.5	3.0	14.0
60	74.6	72	80	4	69.5	85	52.5	37.5	2.5	6	23.0	15.0	18.0	10.5	3.0	14.0
63	79.0	75	83	4	72.5	88	52.5	37.5	2.5	6	23.0	15.0	18.0	10.5	3.0	14.0
65	84.1	77	85	4	78.0	95	52.5	37.5	2.5	6	23.0	15.0	18.0	10.5	3.0	14.0
68	87.3	81	90	4	82.0	96	52.5	34.5	2.5	7	26.0	18.0	18.5	11.0	1.6	10.0
70	87.3	83	92	4	81.0	96	60.0	42.0	2.5	7	26.0	18.0	19.0	11.5	3.0	17.0
75	95.0	88	97	4	87.0	104	60.0	42.0	2.5	7	26.0	18.0	19.0	11.5	3.0	16.0
80	98.4	95	105	4	91.0	109	60.0	41.8	3.0	7	26.2	18.0	19.0	11.5	3.0	16.0
85	104.7	100	110	4	96.0	114	60.0	41.8	3.0	7	26.2	18.0	19.0	11.5	3.0	16.0
90	111.0	105	115	4	103.0	119	65.0	46.8	3.0	7	26.2	18.0	20.5	13.0	3.0	21.0
95	114.0	110	120	4	106.0	124	65.0	47.8	3.0	7	26.2	17.2	20.5	13.0	3.0	21.0
100	117.4	115	125	4	111.0	129	65.0	47.8	3.0	7	26.2	17.2	20.5	13.0	3.0	20.0

**Shanghai Trisun Parts Manufacture Co.,Ltd.**

**Şangay Merkez Ofis:**

Room 05-06, 16th Floor, Hongjia Building, No.388 Fushan Rd. (Near Xiangcheng Rd.), Pudong, Shanghai, China.

**Posta Kodu:** 200122

**Tel:** +86-21-58355541,+86-21-58353145,+86-21-58353343

**Fax:** +86-21-58353141

**E-mail:** [trisun24@trisunltd.com](mailto:trisun24@trisunltd.com)